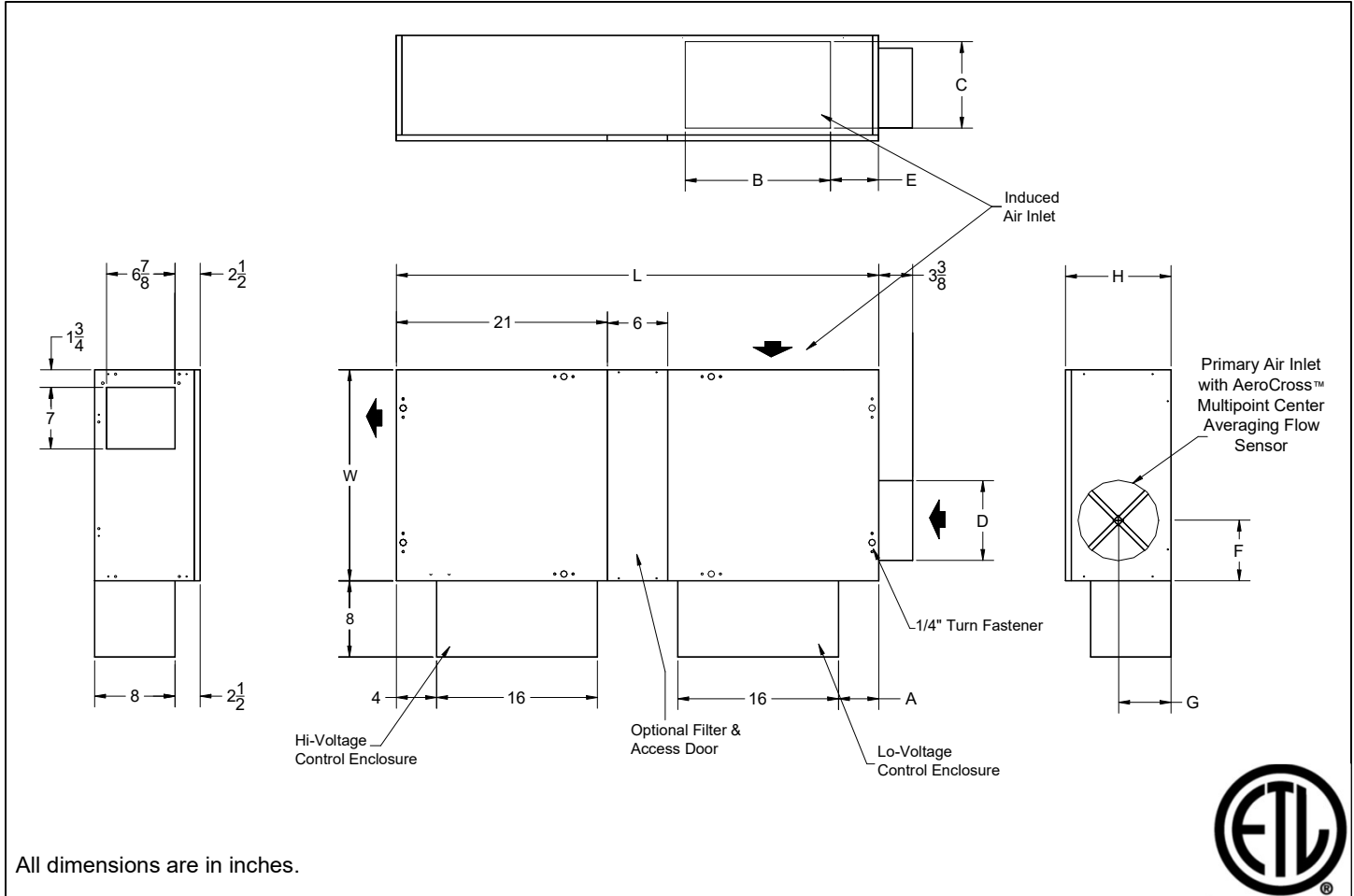


## DLHK

Fan Powered Terminal, Series Flow

Direct Digital Control, Pressure Independent, Access Floor Profile



All dimensions are in inches.

Unit Size	Inlet Size	A	B	C	D	E	F	G	H	L	W	Filter Size
3	9" Diameter	5	14	8	8 <sup>7</sup> / <sub>8</sub>	3 <sup>1</sup> / <sub>2</sub>	5 <sup>5</sup> / <sub>8</sub>	5 <sup>1</sup> / <sub>4</sub>	10 <sup>1</sup> / <sub>2</sub>	48	21	18 x 10
4	9" Diameter	5	14	12	8 <sup>7</sup> / <sub>8</sub>	3	5 <sup>5</sup> / <sub>8</sub>	5 <sup>1</sup> / <sub>4</sub>	14 <sup>1</sup> / <sub>8</sub>	48	21	18 x 14
	9" Diameter				9 <sup>7</sup> / <sub>8</sub>		6 <sup>5</sup> / <sub>8</sub>					

### Motor Amperage Ratings

Unit Size	Motor hp	120/1/60 FLA	208/240/1/60 FLA	277/1/60 FLA
3	1/4	4.3	1.7	1.4
4	1/3	7.4	3.0	2.6

FLA = Full Load Amperage, as tested in accordance with UL 60335

All fan motors are single phase, same voltage as electric coil (when supplied), with exception that 277 V motors are used with 480V, 3 phase coils (4 wire wye).

### Accessories (Optional)

Check  if provided.

- Induced Air Filter, 1" thick, disposable construction type.
- Toggle disconnect switch (not available on units with optional electric coils.)
- Fibre Free Liner
- 1/2" Fibre Free Liner
- 1/2" EcoShield Liner
- Foil Face Liner
- Fan unit fusing
- \_\_\_\_\_

## Accessories (Optional)

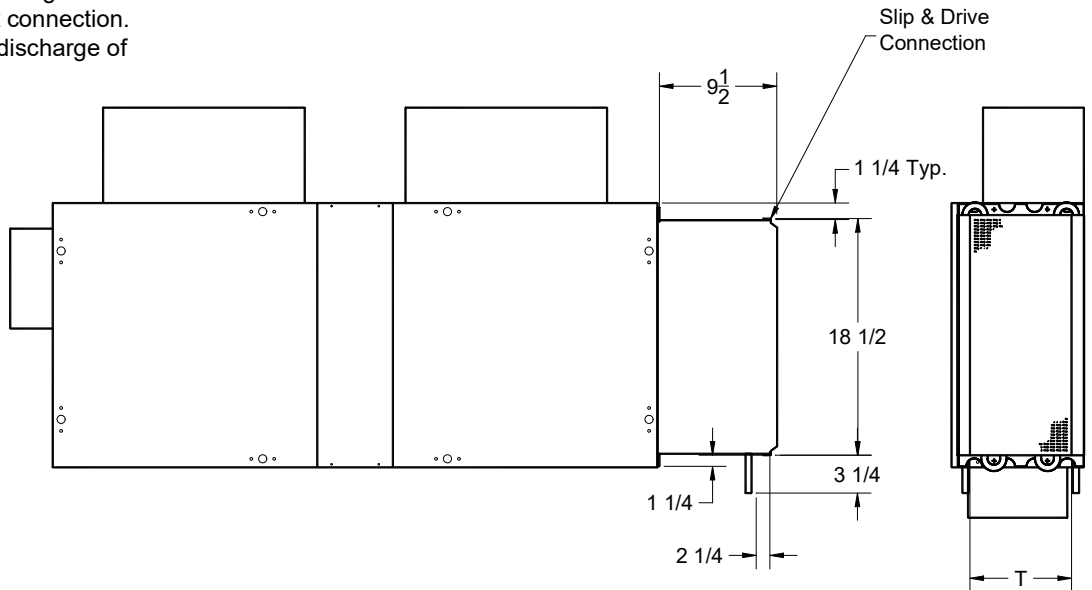
Hot Water Coil Section

- 1/2" copper tubes
- Aluminum ripple fins, 10 per inch
- Connections: Male solder, 1/2" for 1-row and 7/8" for 2-row. Left or right hand connections.
- Galvanized steel casing
- Slip and drive duct connection.
- Coil is installed at discharge of unit.

1 Row

2 Row

Unit Size	T
3	10
4	10



Electric Coil Section

Optional SCR Controlled Electric Heater

Optional Lynergy Controlled Electric Heater

**Standard Features**

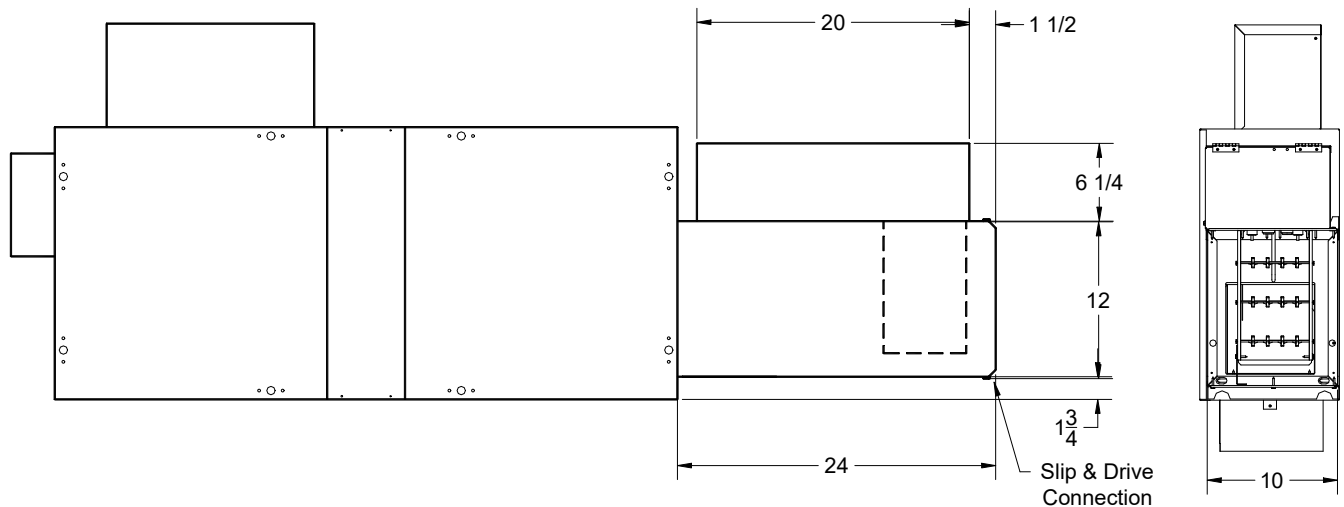
- Automatic reset thermal cutouts, one per element
- Single point electrical connection for entire unit
- Positive pressure flow switch
- Ttransformer

**Options**

- Fuse Block
- Disconnect switch, door interlock type
- Manual reset cutout
- Dust tight construction

**Supply Voltage**

- 208V, 1 ph, 60Hz
  - 240V, 1 ph, 60Hz
  - 277V, 1 ph, 60Hz
  - 208V, 3 ph, 60Hz
  - 480V, 3 ph, 60Hz \*
- \*4 wire wye only



## General Description

- The LHK fan powered terminal is designed to be installed in the underfloor plenum of an access floor grid system.
- 20 gauge steel casing.
- Dual density insulation, coated to prevent air erosion, meet requirements of NFPA 90A and UL 181.
- Adjustable SCR fan speed control with minimum voltage stop.
- Multipoint, center averaging velocity sensor.
- Top access panels can be removed for service of damper, blower, or filter sections.
- Energy efficient fan motor, permanent split capacitor type, mounted in vibration isolators.
- Primary air flow balancing connections.
- Pressure independent primary flow control.
- Single point electrical connections.
- Rectangular discharge opening is designed for flanged duct connections for units without heat.